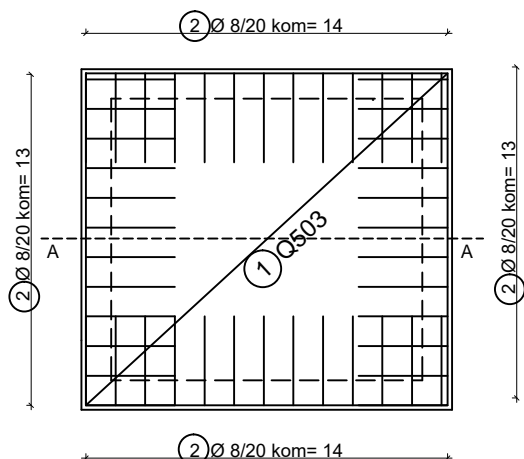


tlocrt temeljne ploče ab jezgre lifta

h = 20 cm

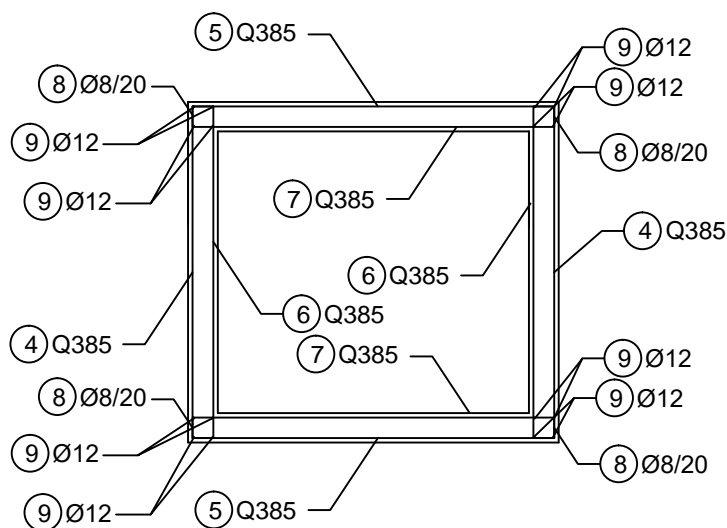
C 25/30, B500B, c = 3,0 cm



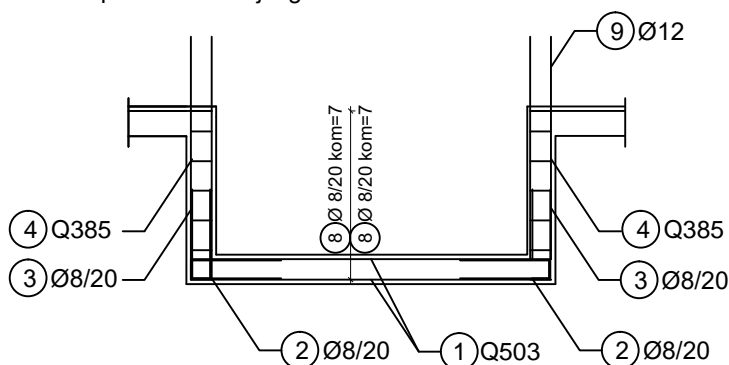
tlocrt AB nadtemeljnih zidova jezgre lifta

h = 20 cm

C25/30, B500B, c = 3,0 cm

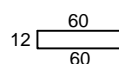


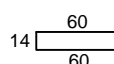
presjek A-A ploče i zidova jezgre lifta



ARMATURA TEMELJNE PLOČE I NADTEMELJNIH ZIDOVA JEZGRE LIFTA

① Q503 244 x 224 cm, kom = 2

12  ② Ø8 L=132 cm kom = 54

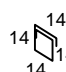
14  ③ Ø8 L=134 cm kom = 54

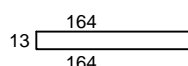
④ Q385 100 x 224 cm, kom = 2

⑤ Q385 100 x 244 cm, kom = 2

⑥ Q385 100 x 196 cm, kom = 2

⑦ Q385 100 x 216 cm, kom = 2

14  ⑧ Ø8/20 L=80 cm, kom = 28

13  ⑨ Ø12 L=341 cm kom = 8

visina konstrukcije temeljne ploče 20 cm
kvaliteta betona C25/30
kvaliteta čelika B500B
zaštitni sloj betona c = 3,0 cm
preklapanja rebraste i mrežaste armature minimalno 20 cm

TLOCRT TEMELJNE PLOČE
JEZGRE LIFTA MJ 1:50